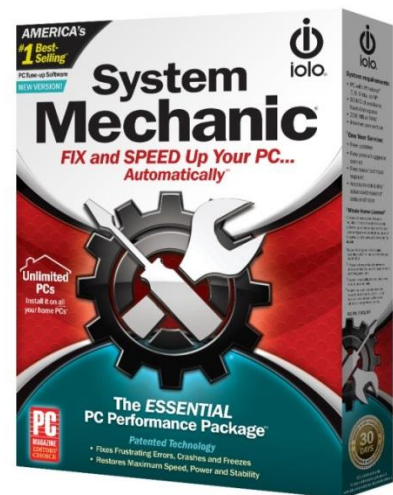


System Mechanic®

Getting Started

System Requirements

- ☐ Windows® 10, 8, 8.1, or 7 x86/64
XP and Vista are compatible up to version 16.0.0.10 only
- ☐ Microsoft .NET Framework 4.0 or later
- ☐ Minimum 512 MB RAM (optimal 2 GB)
- ☐ 35 MB of available hard disk space
- ☐ Internet connection (required for license activation)
- ☐ Windows "Administrator" User Account



A service plan includes Whole Home Licensing™ for every PC in a single family household and automatic upgrades for all minor and major version releases of the product.

Getting Around in System Mechanic

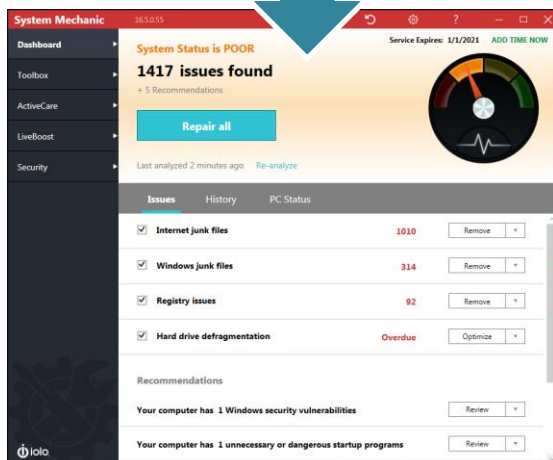
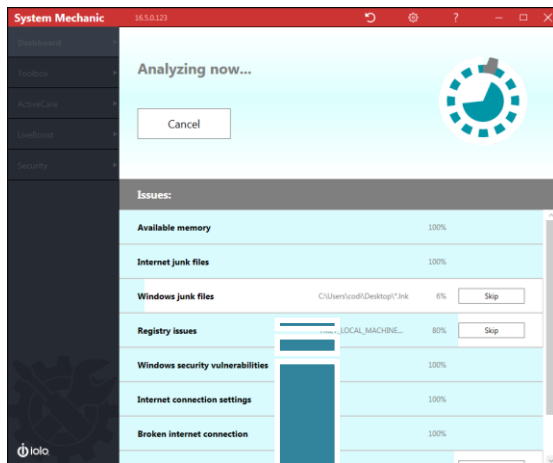
Easy as 1-2-3

There are **three primary ways to use** System Mechanic, depending on your level of expertise:

1 Dashboard

Scan for issues and repair with one click

When you first open System Mechanic, the Dashboard appears and asks you to perform a System Analysis. This will search for issues compromising speed and stability across all major components of your PC.



Try It – Scan & Repair

1. From the Dashboard, click **Analyze Now**.

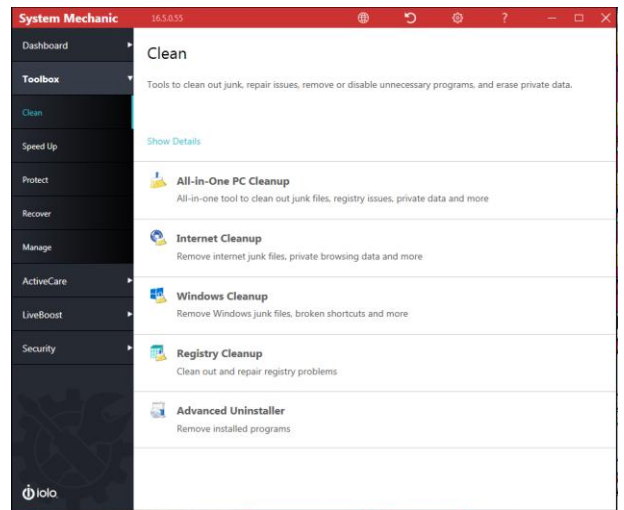
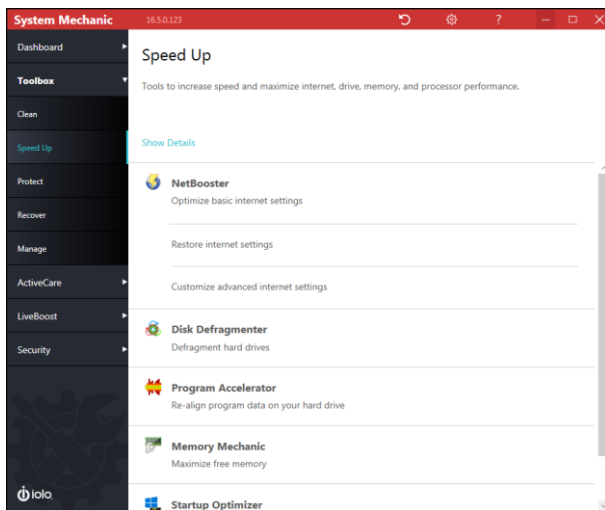
The Dashboard will display the overall status of your PC, as well as list the individual issues it has found.
2. **Repair all** will fix most issues with a simple click.
3. The **down arrows** to the right of each issue offer you more options.
4. In the **Recommendations** section, you'll find items for your review that you must initiate yourself in order to implement any system changes.

These include repairing any Windows security vulnerabilities, as well as turning off at startup any unnecessary apps or services that System Mechanic has found.

2 Toolbox

Pick the repairs that meet your specific needs...automatically or with settings you choose

The individual tools that resolve specific issues such as low RAM or hard drive fragmentation can be run separately and in some cases with greater control over just how each action is performed. For example, in the **Windows Cleanup** tool, you can select specific types of junk files you may want to remove without choosing to remove all Windows junk.

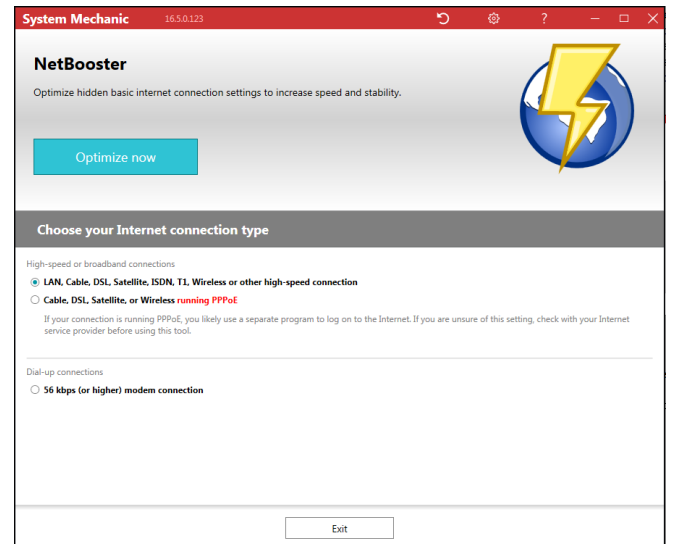


The Toolbox is divided into sections with specific tools to:

- ✓ Clean
- ✓ Speed Up
- ✓ Protect
- ✓ Recover
- ✓ Manage

Each tool has an easy-to-follow wizard to guide you along. On any screen of System Mechanic you may also click the ? icon in the red menu bar at the top to access detailed Help on each tool.

- ☐ Simple, step-by-step wizard formats
- ☐ Easy-to-follow categorized layouts
- ☐ Instructive and engaging graphics
- ☐ Clear presentation of results



3 ActiveCare

Automatically fixes problems without draining resources

The **ActiveCare** tab offers easy toggle buttons to enable or disable various automated repair functions that will run when System Mechanic detects that your PC is on but not in use.

While your computer is on but idle, ActiveCare® monitors the PC's condition based on established performance standards. It then immediately runs repairs if a problem is detected.

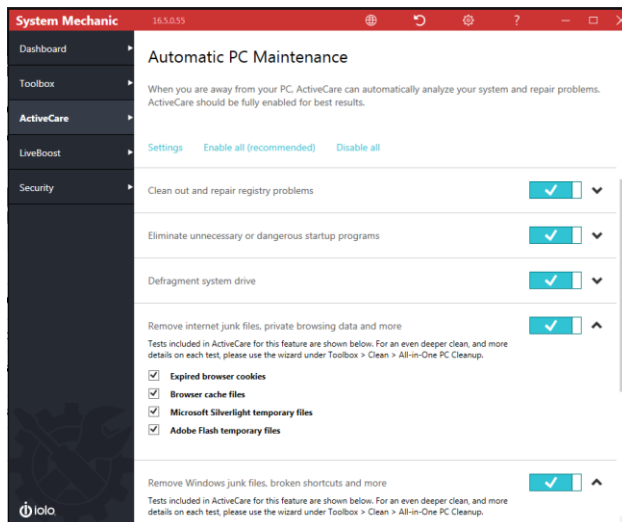
This allows for monitoring of your computer's health and security **without interrupting your work**. ActiveCare runs repairs only when they're needed and only when your computer is idle.

With ActiveCare, you can automatically:

- ☐ Clean out unneeded files when system clutter becomes excessive
- ☐ Clean and repair the registry by removing obsolete and invalid references
- ☐ Streamline Windows startup by eliminating unneeded startup slowdowns
- ☐ Defragment hard drives when they become highly fragmented
- ☐ Remove internet junk and private browsing data

Try It – Automated Maintenance

1. Under **ActiveCare** on the navigation bar, experiment with Enabling or Disabling any desired tasks
2. **Click the down arrow** to the right of each action to **view more details** about it or to see additional options for how that function operates.
3. For enabled tasks, **ActiveCare will monitor for problems while your PC is idle** and will run any needed repairs.



iolo's patented ActiveCare® keeps computers at their maximum speed, reliability, and efficiency without any user intervention or drain on resources

Additional configurations available within the Settings menu allow you to further customize when and how ActiveCare runs, such as setting how frequently it runs, times that you do not want it to run, whether it will run when your system is on battery power, and more.

Real-time RAM, CPU and HDD optimization

LiveBoost adjusts your PC's settings to suit the tasks you're performing

Your Windows PC defaults to a standard power plan that is not optimized for today's high-demand apps. Whether you want seamless graphics during gaming, faster rendering or smoother streaming, LiveBoost features a suite of technologies that precisely calibrate the main components of your machine to maximize speed and responsiveness.

OptiCore and **PowerSense** optimize your processor settings for the task at hand by deprioritizing background tasks and unparking CPU cores when they're most needed.

RAMJet is the automated version of Memory Mechanic that frees trapped memory from apps that no longer need it.

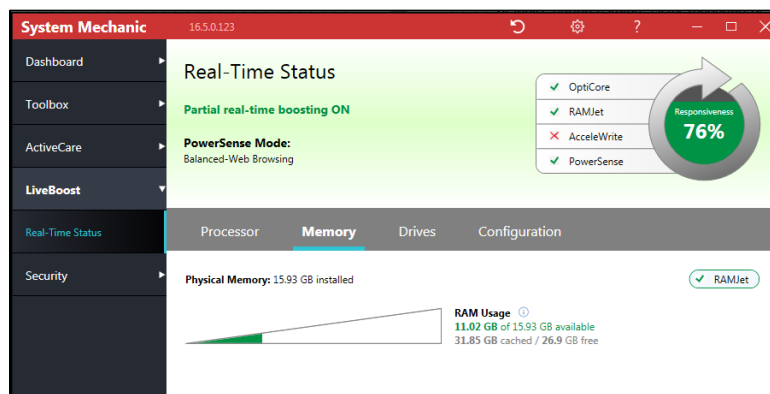
AcceleWrite prevents file fragmentation before it can even occur by writing data to the HDD in contiguous batches, speeding disk read-write and file access.

Collectively, these features balance demands, conserve power, and improve the responsiveness of your CPU, RAM and storage drives.

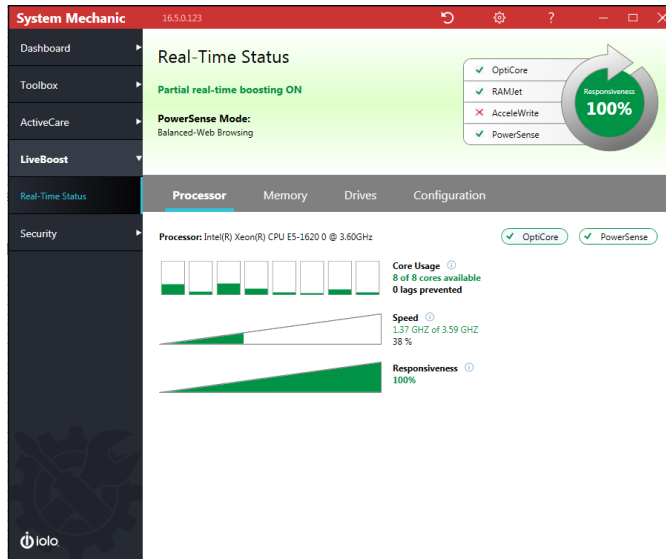
Try It – PowerSense Modes™

1. Click **LiveBoost** on the navigation bar.
2. Click the **Configuration** tab.
3. Choose a **PowerSense Mode** from the dropdown menu that best matches the task you are about to perform.

For example, by choosing **Ultra Performance – Gaming**, PowerSense will unpark your processor cores and rev them to the highest clock speed, disable unrelated processes and services, and flush system memory to dedicate maximum speed to your session.



LiveBoost works silently in the background, occupies minimal system resources, and only processes actions when they're needed.

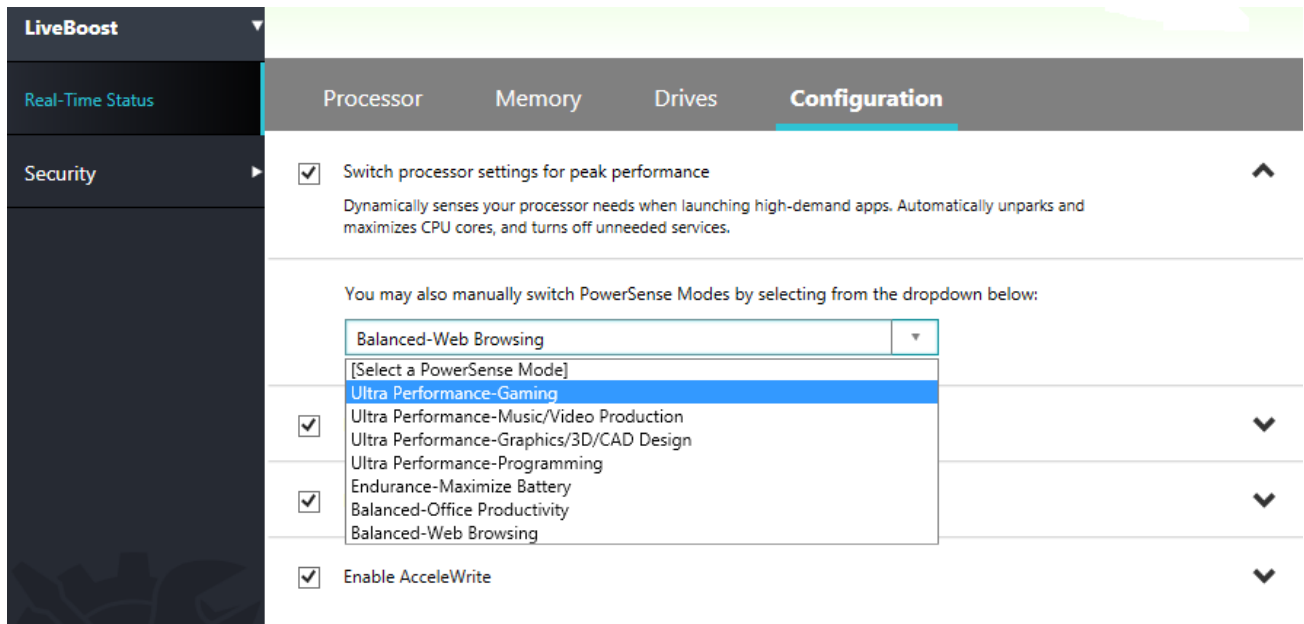


Real-Time Status

The **LiveBoost Real-Time Status** screen displays the current real-time boosting level and system responsiveness in separate tabs for Processor, Memory and Drives.

Configuration tab

The fourth tab in the Real-Time Status section is where you enable or disable the four tools within LiveBoost. It is strongly recommended that you keep all of these tools enabled for maximum system speed and performance.



Switch processor settings for peak performance

Checking this box enables **PowerSense**, which **adjusts processor and other settings automatically** through Modes based on what task you wish to optimize for: Gaming, Music/Video Production, Graphics/3D/CAD Design, Programming, Maximize Battery, Office Productivity, and Web Browsing. Without PowerSense selected, you can still choose the mode that best suits your needs from the dropdown menu.

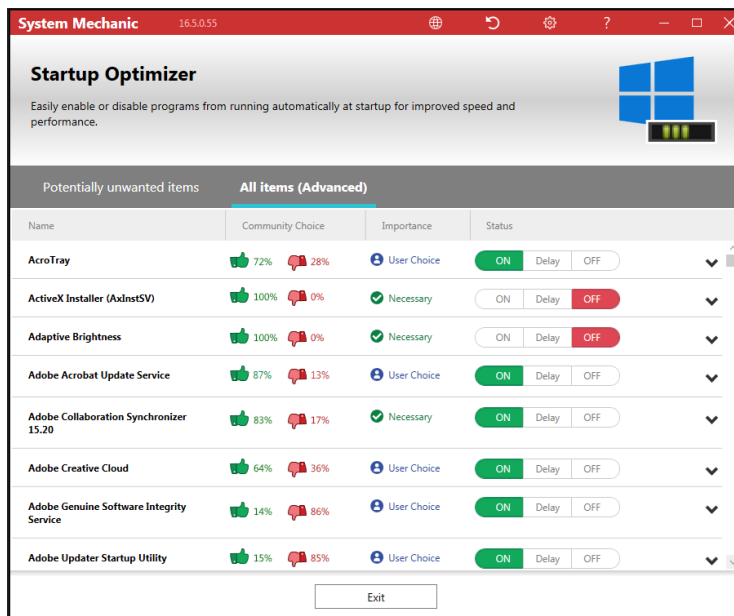
New and Enhanced Features

System Mechanic 16.5 - the modern PC performance app

The single biggest cause of PC performance drain today is **unnecessary bloatware running without your knowledge**.

Emerging after nearly a year in development with an entirely new software framework that **scans and repairs many times faster** than any prior version, **System Mechanic® 16.5** offers a **visionary new solution to unwanted startup apps** taxing system resources—a completely redesigned **Startup Optimizer™** feature.

Newly re-designed Startup Optimizer comprehensively identifies, classifies and disables many new types of modern bloatware from launching and running without your knowledge.



Tune-up Definitions draw upon a well-established database of over 30,000 Windows programs and processes to report to you items launching at startup as either:



This highly granulated classification allows you to **make the most informed decision on whether to allow specific apps to launch**.

In addition, the new Startup Optimizer:

- **Allows you to make finely-tuned, informed decisions** on which apps should and should not launch at startup
- **Community Recommendations** advise you as to what the majority of other users are leaving on or turning off
- **Performance Impact Data** for each item lets you really see what the major culprits are
- **Delayed Start** option keeps boot time speedy without affecting items you don't want to disable
- **Advanced grid sorting** allows you to view items grouped by importance, current startup status and more

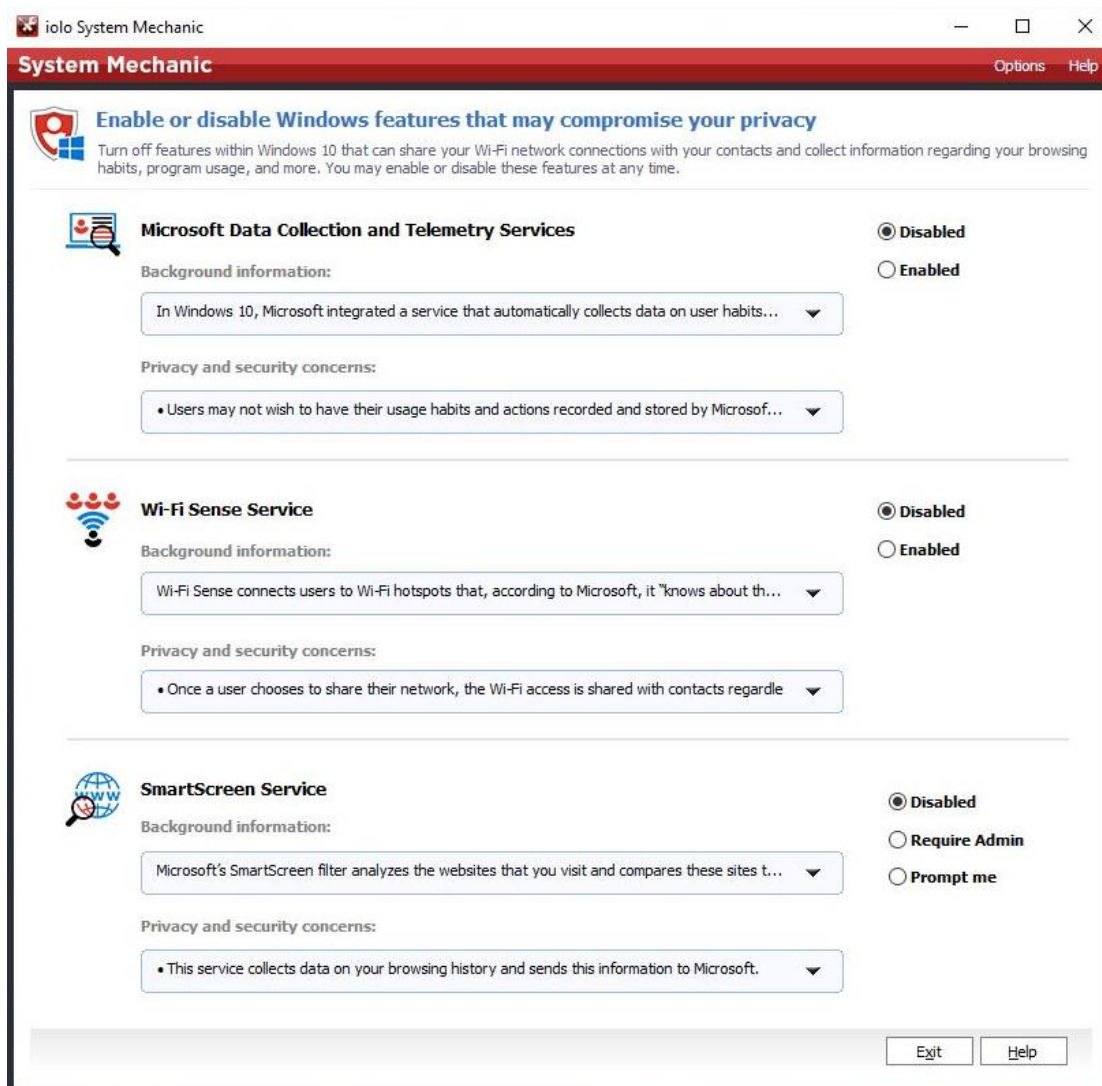
Enhanced Quicksilver High-Performance Platform™ finds whole new categories of issues and problems within Windows that are ripe for optimization.

Enhanced ActiveCare® offers far more control over how Windows and internet junk are removed. Now you can individually choose whether to clean expired browser cookies, caches files, clipboard items, five different types of temp files and much more.

Enhanced NetBooster® lets you apply specific broadband settings for streaming, gaming and more.

Enhanced Privacy Shield™ helps protect your most sensitive personal information.

Many Windows 10 users are surprised and concerned by Microsoft's aggressively ramped-up personal data collection and sharing services. Because these services now default to ON, go largely undetected, and are difficult to disable, iolo engineers created a suite of features under Privacy Shield that enable users to deactivate them easily from one convenient wizard.



Privacy Shield includes:

Disable Personal data collecting and reporting (Microsoft Data Collection and Telemetry Services)

- One click turns off services that automatically record many user habits and actions, including memory snapshots, program usage, system configuration, network connection and more.
- Before Privacy Shield, these services could not be fully disabled without modifying the registry if users followed the default Windows 10 installation process.

Disable Wi-Fi sharing with your contacts (Wi-Fi Sense Service)

- When users allow network sharing, this service stores their encrypted Wi-Fi passwords on a Microsoft server and then shares them with all Outlook, Skype, and Facebook contacts. Disable this service with one click from within the wizard.

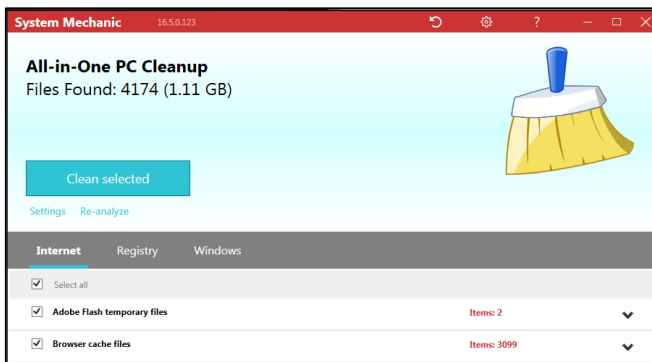
Disable browser history tracking and phishing blocker (SmartScreen Service)

- One click also disables this service that collects data on browsing history and sends this information to Microsoft.

Disable internet bandwidth sharing for updates (Windows Update Delivery Optimization)

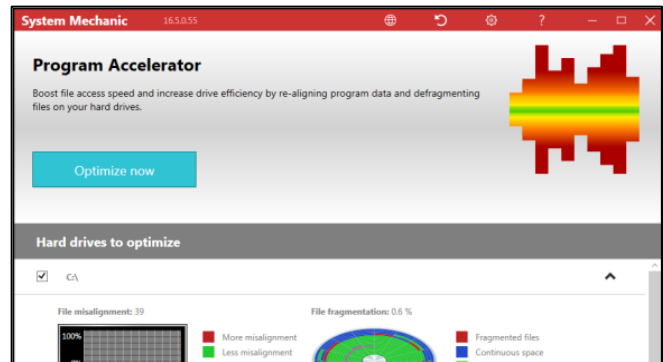
- This broadband-hogging user-to-user service forces your PC to share Windows updates with other users. Sluggish browsing, streaming and gaming were too often the result until iolo engineers came to the rescue with this newest addition to Privacy Shield.

Other recent key System Mechanic innovations:



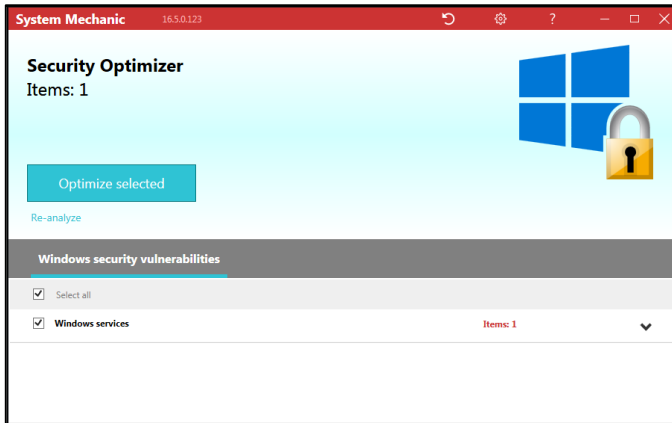
All-in-one PC Cleanup

This re-architected power tool removes Windows junk files, invalid registry entries, sensitive web browsing data, expired cookies, browser cache files, and much more with either one simple click or with customizable settings that let you decide which files to clean out.



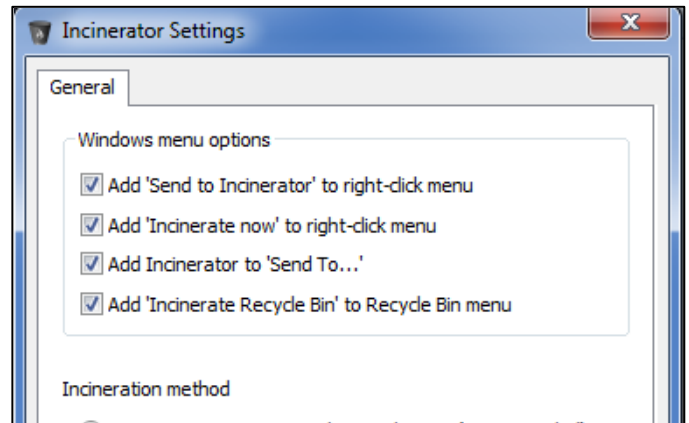
Program Accelerator

Just as data files can become fragmented, today's massive applications contain many individual add-ons and other components that too become fragmented with the repeated opening and closing of complex program files. iolo technologies' patented Program Accelerator tool searches for and re-aligns these program files for faster program launches and disk I/O.



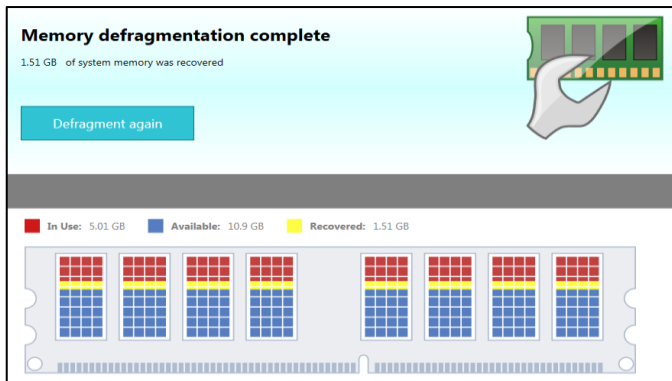
Security Optimizer

Viruses and other malicious programs exploit security vulnerabilities in operating systems and web browsers. Repairing these security flaws protects your computer and your data. The Fix Windows Security Vulnerabilities wizard in this tool can find and repair Windows security flaws that leave your system open to attack.



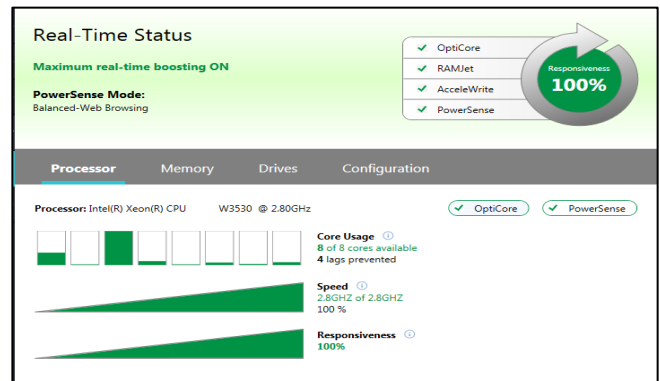
Incinerator

A file deleted through Windows is not completely erased; someone using easily available tools can recover it and view its contents. The Desktop File Incinerator allows you to create convenient desktop access to an "incinerator" that permanently and securely deletes files and folders with military-grade file removal technology.



Memory Mechanic

Programs trap crucial system memory when they grab what they need to run then fail to relinquish this memory when they are no longer in use. Memory Mechanic instantly reclaims this wasted RAM so it can be allocated to programs that actually need it, ensuring your PC remains fast and responsive.



LiveBoost

The ability of a computer to respond quickly to the operating system and the programs it runs is based on a critical triangle of components: processor (CPU), memory (RAM) and the storage drive (HDD). If any of these components are compromised, the entire performance chain is affected. LiveBoost automatically keeps these key elements of fast, responsive computing optimized in real time so your PC is always ready for action.

Thanks for exploring System Mechanic!